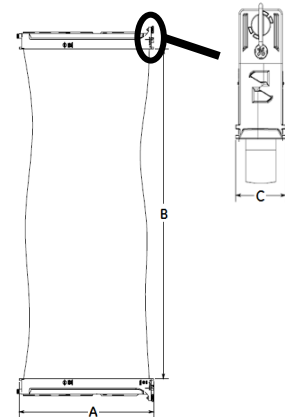


ZeeWeed* 500D Module

FACT SHEET

Module Dimensions				
Application	Product	Width (A) mm (in)	Header-to-Header Length (B) mm (in)	Depth (C) mm (in)
MBR	500D	844 (33.2)	1,940 (76.4)	49 (1.9)
Water	500D			52 (2.1)
		500Ds	1,577 (62.1)	52 (2.1)



Module Properties									
Application	Membrane Surface Area m ² (ft ²)	Max. Shipping Weight ¹ kg (lb)	Lifting Weight ² kg (lb)	Material	Nominal Pore Size (µm)	Fibre Diameter (mm)	Surface Properties	Fibre Tensile Strength (N)	Flow Path
MBR	40.0 (430)	28 (61)	28 – 75 (61 – 164)	PVDF	0.04	2.2	Non-ionic & Hydrophilic	> 600	Outside-In
Water	40.9 (440)	32 (70)	30 – 74 (66 – 163)			1.9			
	32.5 (350)	26 (57)	26 - 72 (57 – 159)			1.9			

¹ Packaged

² Varies with solids accumulation

Operating & Cleaning Specifications						
Application	TMP Range kPa (psig)	Max. Operating Temp. °C (°F)	Operating pH Range	Max. Cleaning Temp. °C (°F)	Cleaning pH Range	Max. Cl ₂ Conc'n (ppm)
MBR	-55 to 55 (-8 to 8)	40 (104)	5.0-9.5	40 (104)	2.0 – 10.5 (<30°C)	1,000
Water	-90 to 90 (-13 to 13)				2.0 -10.0 (30-40°C)	

Veolia Water Technologies

Please contact us via:

www.veoliawatertechnologies.com